

# SD Memory Card & MultiMediaCard™ Connectors (Reverse Mount Stand Off 1.8mm Type)

**NEW  
2010**

SCDAAA0600

## Introducing our reverse mount stand off 1.8mm variety.



### Features

- Upper frame with 4-GND terminal structure provides good characteristics for ESD and noise.
- Stand off type enables mounting of other components under connector.
- 8mm eject stroke for easy operation.
- Stable coplanarity due to insertion molding structure.
- Internal mechanism prevents accidental card ejection.

### Applications

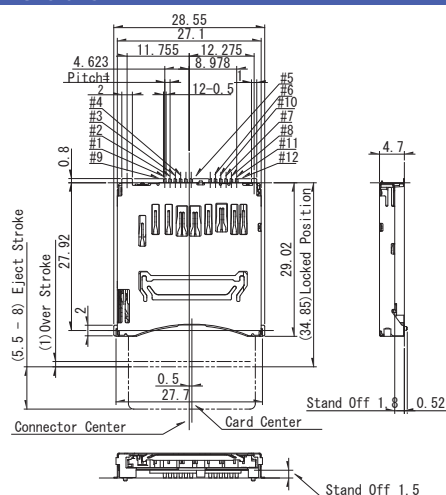
- Digital still cameras, digital camcorders, electronic dictionaries, home AV equipment (TVs, DVD players), notebook PCs, personal digital assistants, etc.

### Typical Specifications

Items		Specifications
Applicable media		SD Memory Card, MultiMediaCard™
Mounting type		Surface mounting type
Mounting style		Reverse mount
Media ejection structure		Push-push type
Voltage proof		100V AC 1minute
Insulation resistance (Initial)		1,000MΩ min.
Contact resistance (Initial)	Connector contacts	100mΩ max.
	Detection switch	500mΩ max.
Insertion and removal cycle		10,000cycles

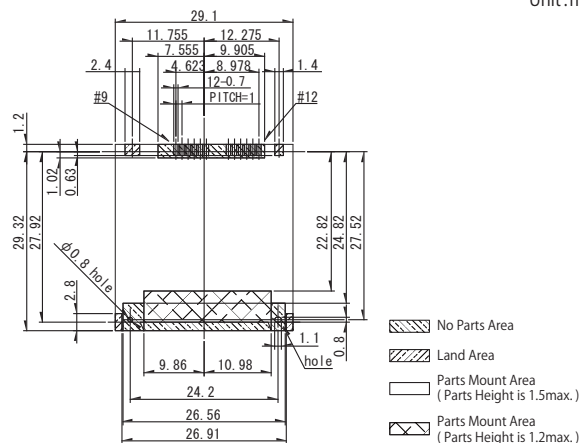
### Dimensions

Unit:mm



### PC board land dimensions (Viewed from switch mount face)

Unit:mm



### Precautions when handling our products

- For the export of products which are controlled items subject to foreign and domestic export laws and regulations, you must obtain approval and/or follow the formalities of such laws and regulations.
- Products must not be used for military and/or antisocial purposes such as terrorism, and shall not be supplied to any party intending to use the products for such purposes.
- Unless provided otherwise, the products have been designed and manufactured for application in equipment and devices which are sold to end-users in the market, such as AV (audio visual) equipment, home electronic equipment, office and commercial electronic equipment, information and communication equipment or amusement equipment. The products are not intended for use in, and must not be used for, any application of nuclear equipment, driving control equipment for aerospace or any other unauthorized use.  
With the exception of the above mentioned banned applications, for applications involving high levels of safety and liability such as medical equipment, burglar alarm equipment, disaster prevention equipment and undersea equipment, please contact an Alps sales representative and/or evaluate the total system on the applicability. Also, implement a fail-safe design, protection circuit, redundant circuit, malfunction protection and/or fire protection into the complete system for safety and reliability of the total system.
- Before using products which were not specifically designed for use in automotive applications, please contact an Alps sales representative.

### Cautions for using this catalog

- The specifications herein are an overview of the specifications. Obtain official specifications before use.
- The colors of the products in the catalog may slightly differ from those of the actual products.
- The external appearance, functions and other specifications herein may be changed for improvement and other reasons without prior notice.  
Furthermore, the products herein may discontinue without prior notice.
- MultiMediaCard (MMC) is a trademark of MultiMediaCard Association.
- SD is a trademark of TOSHIBA Corporation.
- All product names, company names and names of standards described in this catalog are trademarks or registered trademarks of their respective owners.
- The contents of this catalog are according to Alps Electric as of April 2010.
- This catalog is valid until the end of December 2010.

### Inquiries about this product

Products Information Center

+81 (3) 5499-8154

Products Information Site

<http://www.alps.com/products/e/>
**ALPS ELECTRIC CO., LTD.**

1-7, Yukigaya-otsukamachi, Ota-ku, Tokyo, 145-8501, Japan